

THE NEXT STEP IN USER FRIENDLINESS

From now on, attaching the oil pan and gasket to the engine block is no longer a two-man job. Simply insert Snap-ups in four corners of the block and slide all parts into place: two small protrusions keep the oil pan and gasket suspended, so you can easily insert the bolts that keep everything together. It's fast. It's easy. And it makes servicing a whole lot easier.

NEW

AVAILABLE IN TWO SIZES (PACKED PER 4)

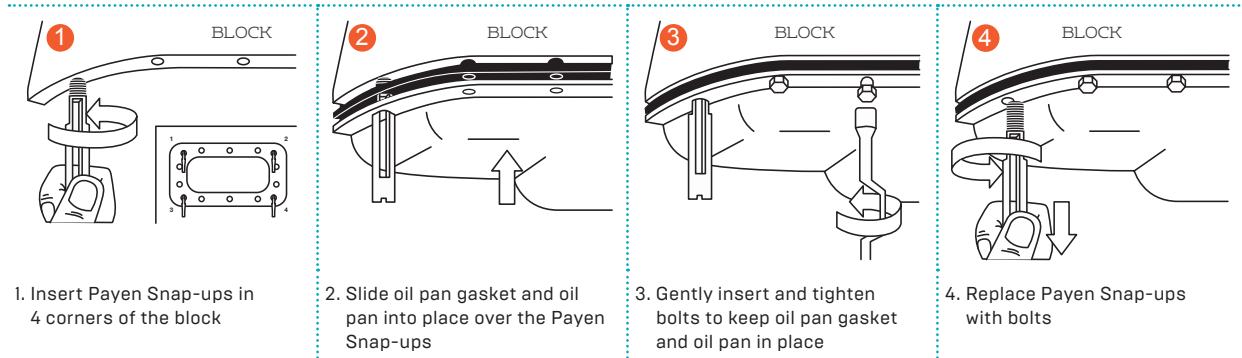
LZ002 (ref to order) > 6 mm



LZ003 (ref to order) > 8 mm



How to use



Watch the video tutorial:



ENGINE EXPERTISE

